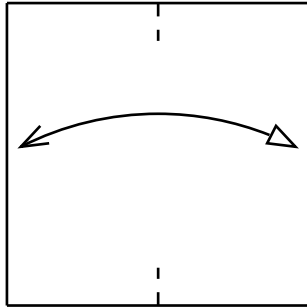


Magic Rose Cube - Petals

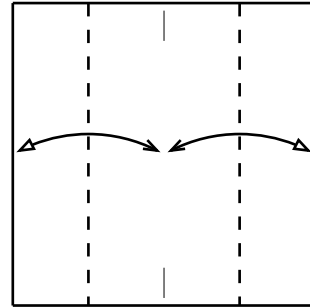
Design: Valerie Vann

Diagrams: Jerome Gout - Copyright 2001

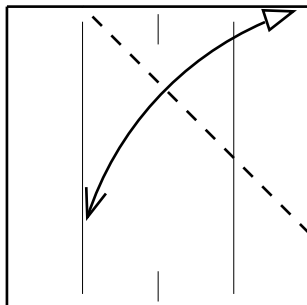
This diagram has been made for a personal usage only. Do not distribute this diagram as Valerie's request.
Use 6 square, 3 for leaves (green) and 3 for rose petals (rose, yellow or red).
Difficulty : Intermediate - for a 10cm initial squares you'll get a ~4cm cube - Color behind



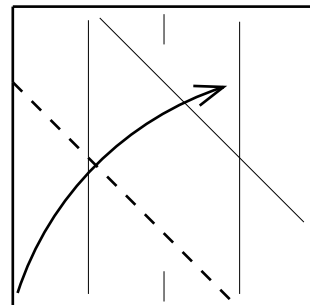
1- Begin with leaves.
Just pinch half



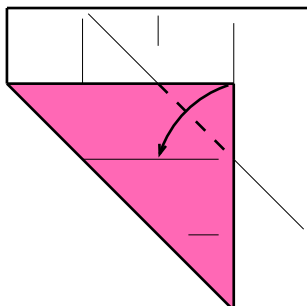
2- Fold unfold vertical quarters.



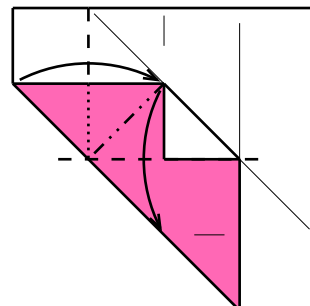
3- Fold and unfold right top bissector



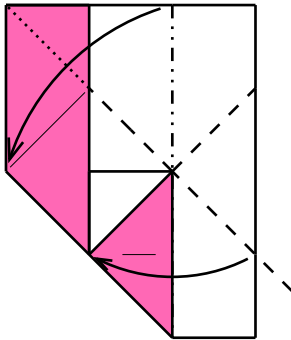
4- Fold left bottom bissector



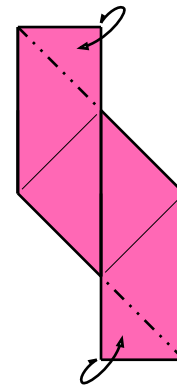
5- Fold corner using horizontal crease.



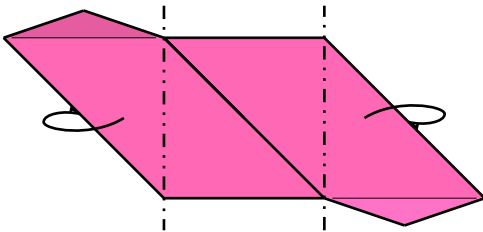
6- Swivel fold.



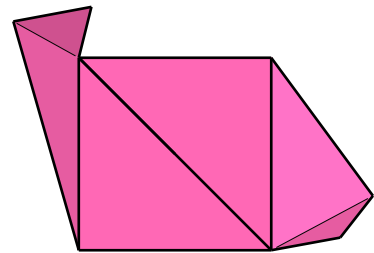
- 7- All folds exist except the right one.
White upper right part should go behind left green layer.
You can open slightly the green upper left layer.



- 8- Mountain fold unfold to form lockers.
Let them at 90 degrees backwards.



- 9- Fold back both lockers to 90 degrees.



- 10- Finished Magic Rose Cube petal.
The inner square will be a cube face.
Its diagonal will guide the assembly
Make three modules like this.